

**JOYCE ANN LYBECKER**  
1930-2013

Joyce was born in Monroe, Washington and raised in Walla Walla, Washington. She attended Washington State University at Pullman where she received a degree in Home Economics. It was there that she met Robert Roy Finnell whom she married in 1952. They moved to the San Jose area in 1966. They had four children; Susan 1954, James 1955, Barbara 1957, and Patricia 1960.

Joyce and Rob were married for 55 years, until Rob's passing in 2007. He was 77 years old.

Joyce worked at the Media Resource Center (ecumenical film/video library) for over 25 years.

On March 13, 2013, Joyce died in Campbell, California where she had resided for 47 years. She was one month short of 83 years old. She was buried with Rob at Los Gatos Memorial Park in San Jose, Santa Clara County, California

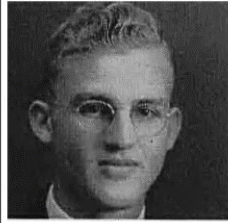


50<sup>th</sup> wedding anniversary in 2002

# JOYCE ANN LYBECKER

## 1930-2013

William, Jason, Hubbard, Jason, Jason, Jason, Jesse, Augustus, Ella, Chester



**Robert Roy Finnell**

b. 24 FEB 1930 • Lewiston, Idaho  
 d. 12 AUG 2007 • Campbell, Santa Clara County, California

**Joyce Ann Lybecker**

b. 3 APR 1930 • Monroe, Snohomish, Washington  
 d. 13 MAR 2013 • Campbell, Santa Clara, California  
 m. 6 Jul 1952 • Whitman, Washington



Augustus  
 Ella  
 Chester  
 Joyce

**Susan (Sue) Marie Finnell**

b. 3 JAN 1954 • Edwards, Kern, California

**James (Jim) Scott Finnell**

b. 21 JUN 1955 • San Bernardino, San Bernardino, California

**Barbara Ann Finnell**

b. 30 MAY 1957 • Syracuse, Onondaga, New York

**Patricia Louise Finnell**

b. 15 JUN 1960 • Santa Barbara, Santa Barbara, California

**Occupation:**

Joyce,  
 Media Resource Center

**Education:**

Joyce,  
 Washington State University in Pullman: Home Economics Degree  
 Rob,  
 Washington State University, Electrical Engineering & Communications  
 Olympia High School

**Religious Affiliation:**

Methodist



*Siblings:  
 Russell, Doris, Joyce and Donald*